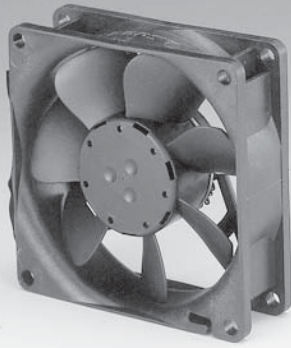


8400V Series

Tubeaxial

80x80x25mm VARIOFAN



- DC fans with electronically commutated external rotor motor. Fully integrated commutation electronics.
- With electronic protection against reverse polarity, blocking and overloading; partially impedance protected.
- Mounting from either face using four 4.3 mm holes.
- Fan of fiberglass reinforced plastic. PBTP housing, PA impeller.
- Air exhaust over struts. Rotational direction CCW looking at rotor.
- Electrical connection via 2 leads AWG 24, TR 64. Stripped and tinned ends.
- UL, CSA, VDE approvals on some models, please contact application engineering.

Part Number	CFM @ 0	VDC	Volt. Range	Power (W)	dBA	Max Amb. Temp C	Bearing Type	Features	Wgt. (lbs)
8412NGLV	12-19	12	10 to 14	0.9-1.1	10-12	70	Sintec	Leads	0.31
8412NGMLV	15-27	12	8 to 14	1.1-1.5	10-19	70	Sintec	Leads	0.31
8412NGMI	21-34	12	8 to 14	1.4-1.5	13-26	70	Sintec	Leads	0.31
8412NGMV	21-34	12	8 to 14	1.4-2.0	13-26	70	Sintec	Leads	0.31

